



sa xelida

TAMARIU PREMIUM HOMES



# Living in a sea of sensations.

Sa Xelida means sea, a sea of sensations that makes you feel alive and at peace with yourself, and land, a direct, stable and pure connection with nature. A philosophy, a way of seeing and living life surrounded by peace and tranquillity; feeling our surroundings, our family, our home and the environment, nature, at all times. A symbiosis of life.





# Somewhere to live the dream

---

Enter a unique environment, a life surrounded by peace, nature and good energies. Enjoy the landscapes that the sea and the Costa Brava gift us, and what it means to live your life there.

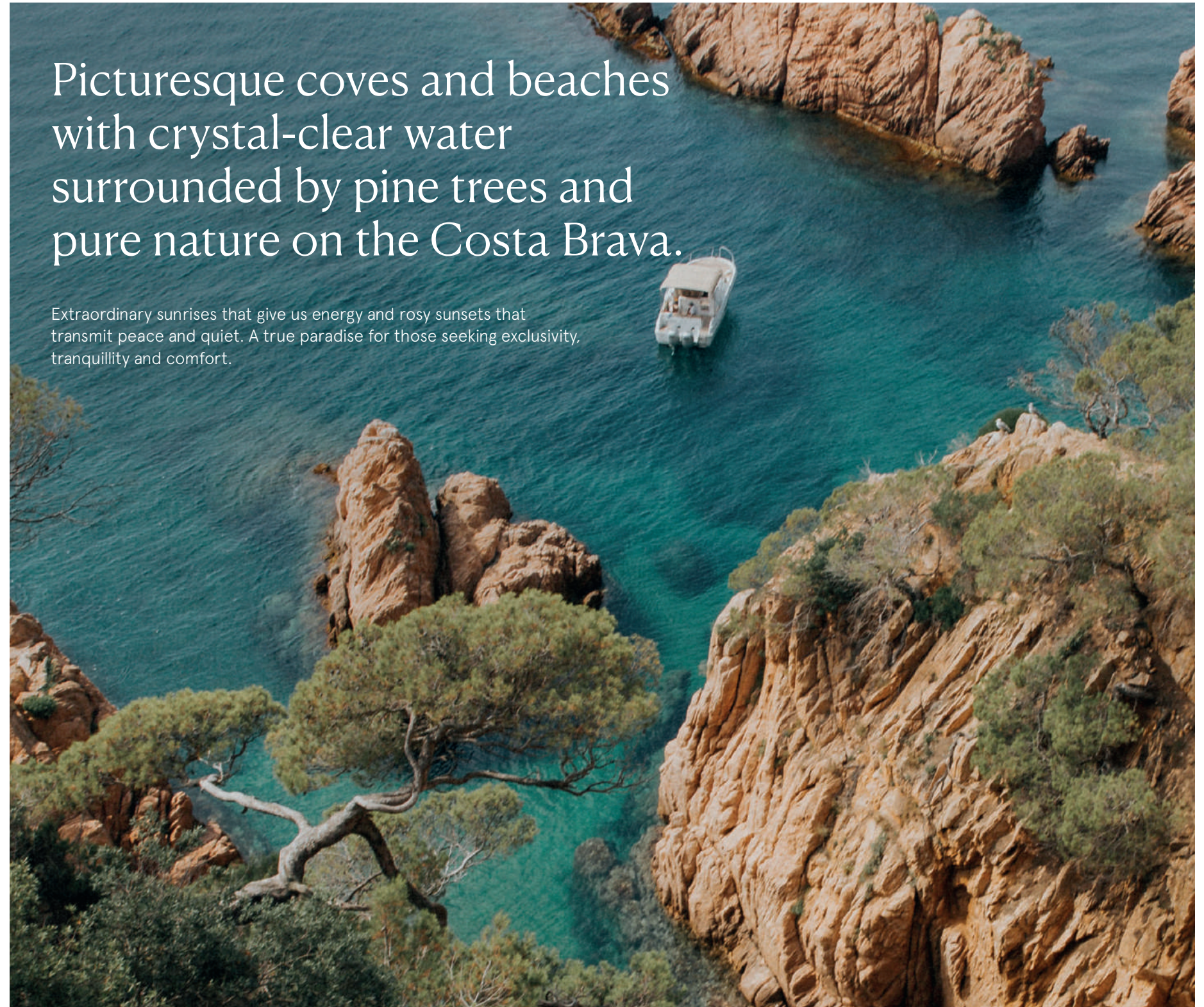
# An exceptional philosophy of life like its surroundings.

The Costa Brava, in the north-east of Spain, is one of the most impressive and exclusive places in Girona. A province surrounded by a unique culture, such as the life and works of Dalí, and extraordinary cuisine, such as the dishes created by the Roca brothers.



# Picturesque coves and beaches with crystal-clear water surrounded by pine trees and pure nature on the Costa Brava.

Extraordinary sunrises that give us energy and rosy sunsets that transmit peace and quiet. A true paradise for those seeking exclusivity, tranquillity and comfort.





## Tamariu, a hidden secret in the Mediterranean.

Hidden in one of its bays, Tamariu, a small old fishing village, welcomes you with crystal-clear water and a calming and relaxed ambience. A place where the sound of the waves breaking on the coast and the smell of the sea envelope you and encourage you to enjoy the moment.



## Aigua Xelida, one of the best coves in Tamariu.

Let yourself be carried away by the sea breeze and the aroma of nature from your own home. Surrounded by pine trees and rocks, a uniqueness of its own that makes it special, like the colour of its water.



Prawns from Palamós,  
anchovies from L'Escala,  
rice from Pals, wine and  
oil from the Empordà... A  
long list of delicacies with  
essence of the  
Costa Brava.

As well as its natural beauty, the Costa Brava is also known for its delicious Mediterranean cuisine, its high quality restaurants and its world famous chefs.

*El Cellar de Can Roca by the Roca brothers, Miramar in Llançà by Paco Pérez, Casa Mar in Llafranc by Quim Casellas, Compartir by Mateu Casañas, Eduard Xatruch and Oriol Castro... Renowned restaurants and chefs.*

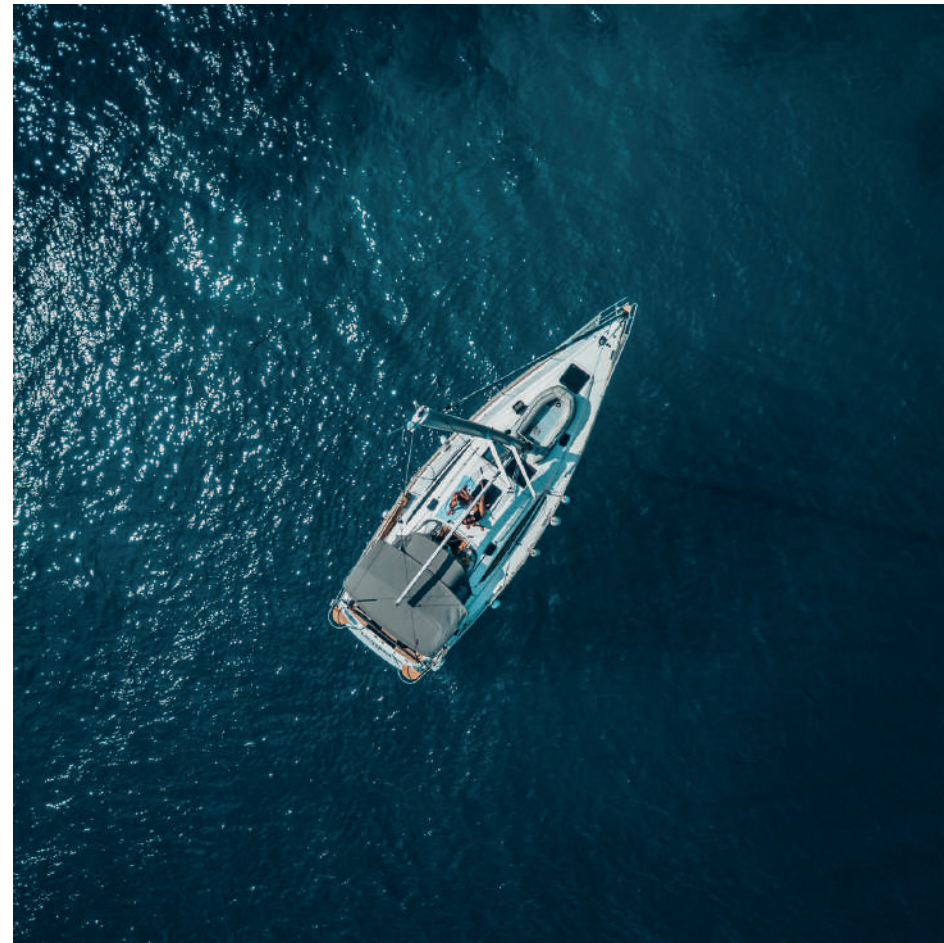


A dreamy spoon and  
fork culture.

Tamariu is an excellent place to taste local flavours, with a great variety of restaurants that offer typical Spanish and regional dishes.

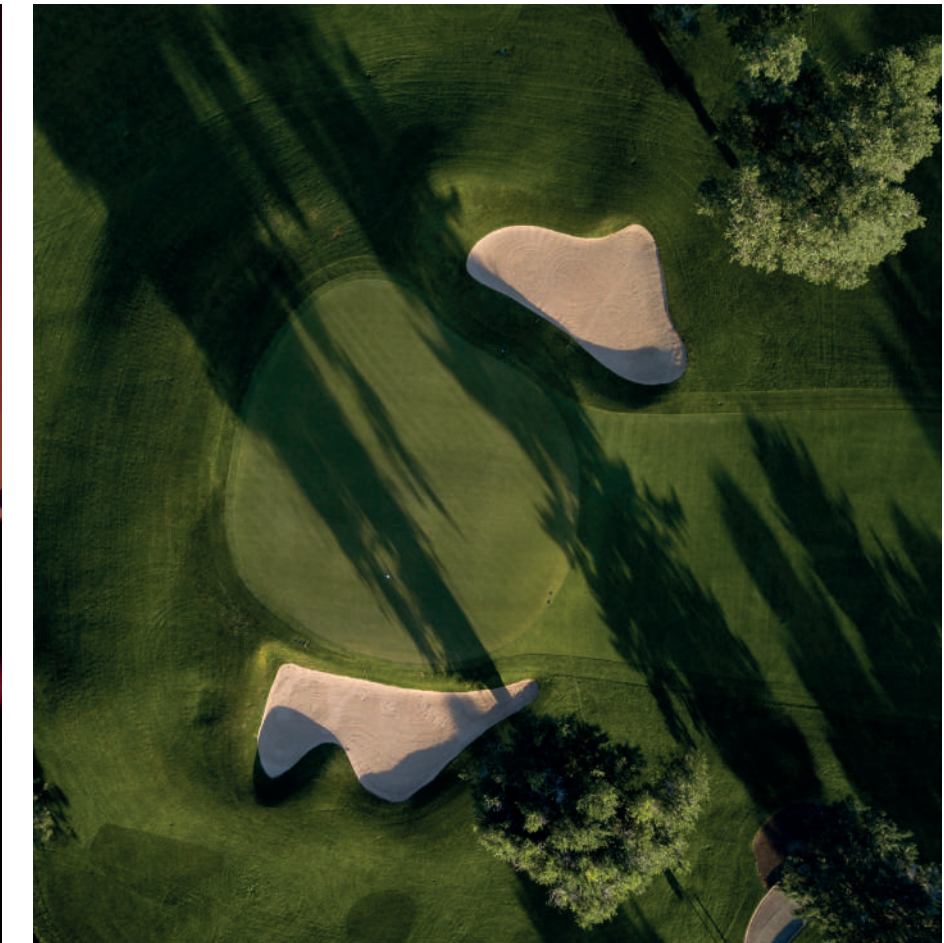
A destination of unique and exclusive experiences in an impressive and unbeatable.

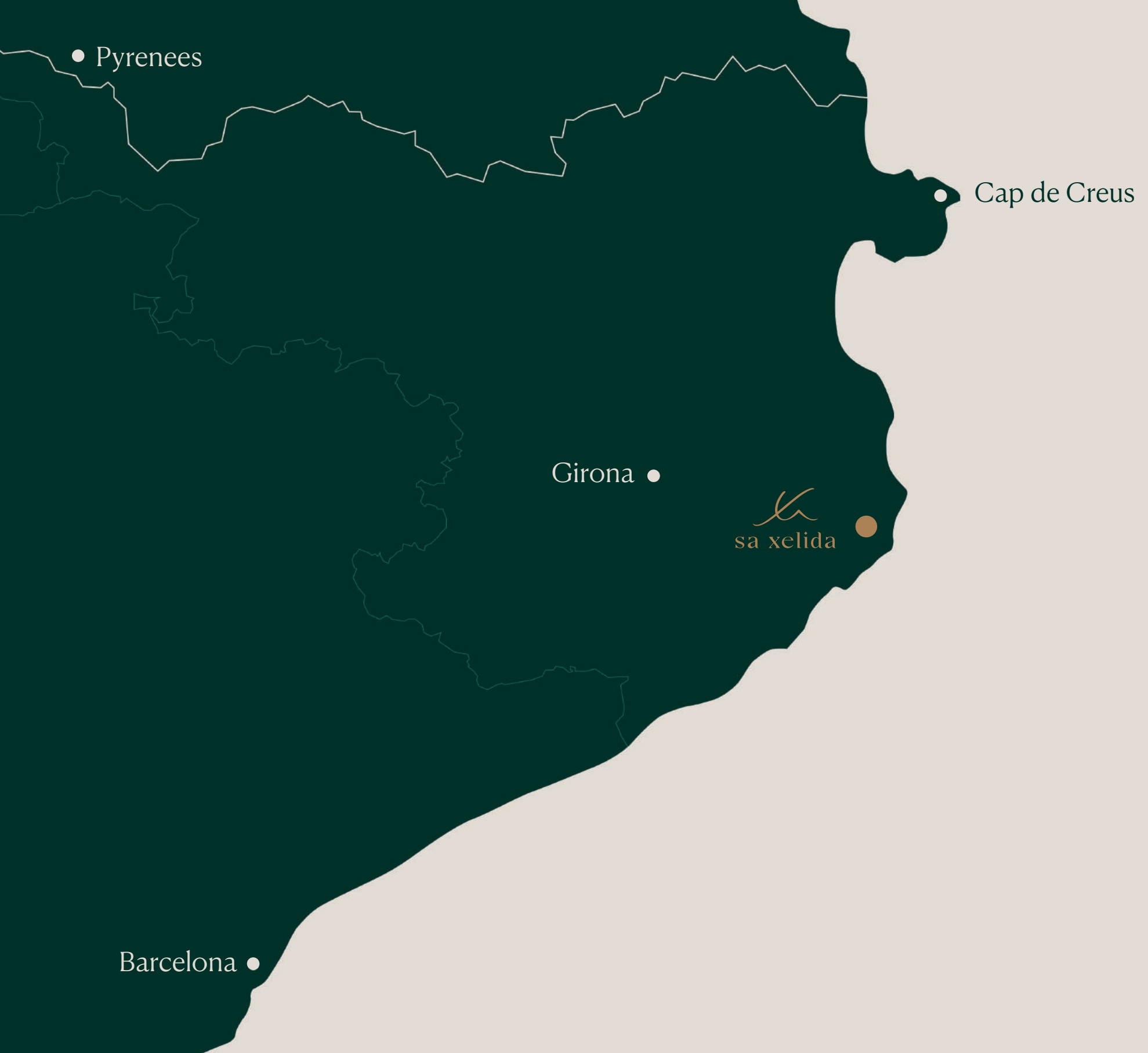
The Costa Brava offers a wide range of unique leisure activities: internationally renowned music festivals, exclusive leisure clubs, golf courses with impressive views and, of course, extraordinary nautical experiences in the Mediterranean sea.



Endless experiences surrounded by pine trees and the sea.

Enjoy a calm and comfortable life. Breathe fresh air scented with pine and the sea. Touch the sea spray, walk on sandy beaches and submerge yourself in crystal-clear water. Savour the best dishes that the land and sea give us.





# Tamariu Premium Homes.

Within this setting and surrounded by this culture and philosophy of life, we find Sa Xelida, a residential project integrated in the natural setting of Tamariu. A real, natural and sustainable connection between the home, the people and the landscape.





# Residential project

Sa Xelida is a residential project of reference on the Costa Brava as a clear dialogue between architecture and the landscape. It comprises 15 properties, 7 single-family homes and 8 semi-detached, between 450 m<sup>2</sup> and 600 m<sup>2</sup> and which are on plots of between 700 m<sup>2</sup> and 2500 m<sup>2</sup>.

*Being in your own home you will feel in direct contact with the surrounding environment and nature, thanks to the design, the materials used and chosen vegetation that is completely native*





# Symbiosis between architecture and landscape.

A sustainable project integrated in the environment that uses typical native plants to the area that do not need artificial watering, such as rosemary, thyme, wild roses and many more.



# All the character of the area reflected in your new home.

A natural individuality transformed into a home. An environment of contrasts translated into comfort. Somewhere to live and disconnect feeling at one with Mother Nature.



# Light, warmth and home.

Each of the Sa Xelida houses has 4 floors. Firstly, the access floor for entering the residence, followed by the night floor with the bedrooms. Next, the day floor with the dining room, kitchen and terrace, and finally, the basement, a multi-purpose floor combining leisure and functionality.

All the properties have cross ventilation and guaranteed sunlight between the 10 to 12 solar hours in the winter solstice.



# Welcome home.

On the access floor of both types of houses, single-family and semi-detached, we enter from the street through a porch leading to the entrance door and, just beside it, we find the garage for two cars and a motorbike, and a storage area. Once inside, we find a pedestrian entrance with access to the lift and the stairs.



Just in front of the stairs, this floor has a landscaped cover that gives the sensation of infinite vegetation leading to the sea.





Fall asleep looking at the stars. Wake up looking at the sea.



On the night floor we find the bedrooms. Each property has 3 or 4 suites and 1 or 2 patios open to the outside, depending on the type of house.





# A completely Mediterranean life.

On the day floor, the stairs divide the space. At the front we have the living room and dining room completely open to the outside, and at the back, the kitchen with outside access and a multi-purpose space or suite for guests.

Outside we find the covered terrace, the sundeck and a pool for enjoying the Mediterranean climate.



# Functionality and fun.

Finally, on the last floor, we find a multi-purpose room that is suitable for a screening room, wine cellar, gym or studio. It also has a storage area





# Materials & finishes.



All the Sa Xelida properties have high quality materials that coexist in the best way possible with the environment, and luxury finishes to create aesthetically delicate and welcoming spaces.



# Interior.

A warm, comfortable and pleasant home. Flooring, cladding, furnishings and technology at the service of family wellbeing. The best for a home designed for daily life and the pleasure of comfort.



## Flooring.

Day floor with large format porcelain stoneware tiles by Porcelanosa or equivalent.

Bedrooms with oak parquet by Porcelanosa.



## Cladding.

Walls in the ground floor life area clad with vertical wooden panels.



## Finishing work.

White lacquered interior sliding and swing doors with stainless steel handles.



## Bathrooms.

Extra-flat shower tray with thermostatic tap and built-in shower with a glass screen.

Bathroom fittings from the Tres/Hansgrohe brand or equivalent.

Matt white freestanding bathtub in main bedroom, Mapini brand or equivalent.

## Kitchen.

Kitchen furnishings from the Modulnova brand or equivalent.

Household appliances from the SIEMENS brand or equivalent.



## Climate & home automation control.

Climate control, underfloor heating and hot water using aerothermal energy.

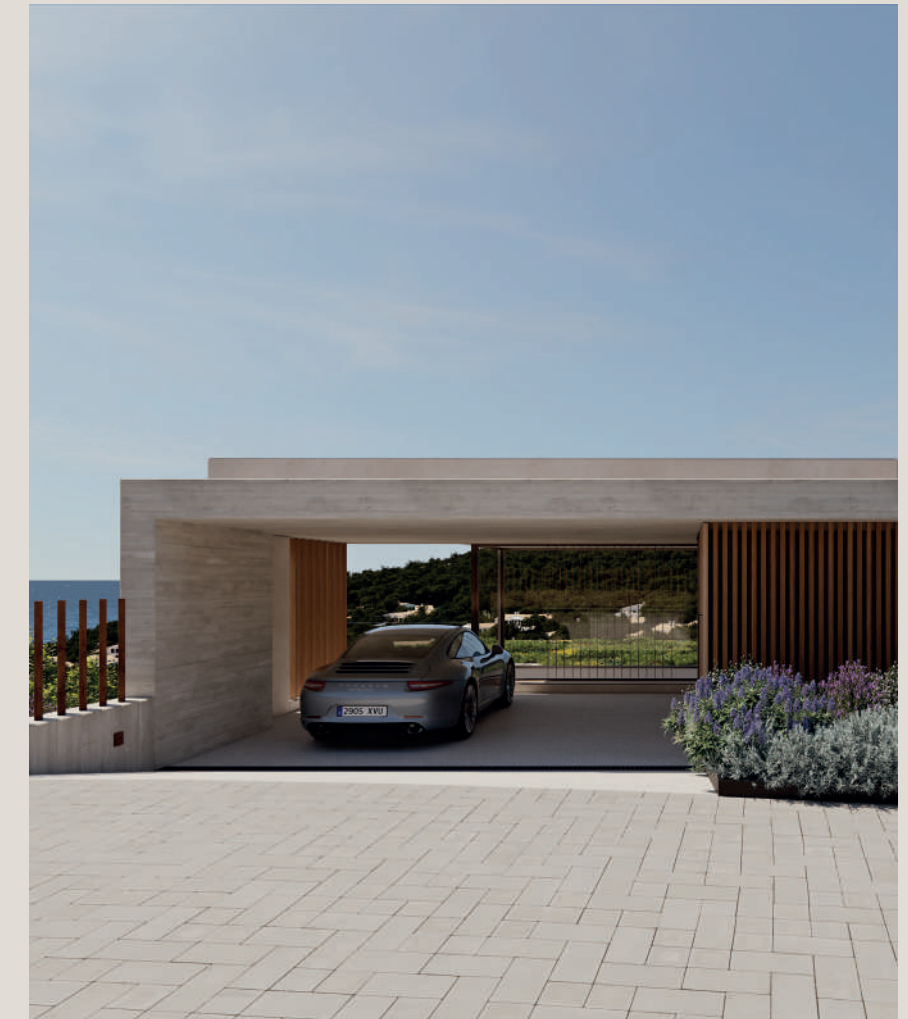
# Exterior.

A life connected to the environment, the vegetation and the sun. Long-lasting, quality materials and finishes to withstand all kinds of weather conditions, that are attractive to offer peaceful and relaxing spaces.

## Paving.

Exterior terrace paving using large format porcelain stoneware from Porcelanosa or equivalent.

Technological wooden decking for the pool area.



## Cladding.

Exterior façades clad with large format porcelain stoneware from the Porcelanosa brand or equivalent, combined with panelling and solar control of vertical, technological wood slats.

## Finishing work/Glazing.

Sliding, lacquered aluminium finishing work in the day area with hidden frame, built-in tracks and double glazing.

Entrance door to the home panelled with vertical technological wood slats.



## Solar control and pool.





Exterior pergola for solar control in the porch area, with a stainless steel substructure and technological wood slats.

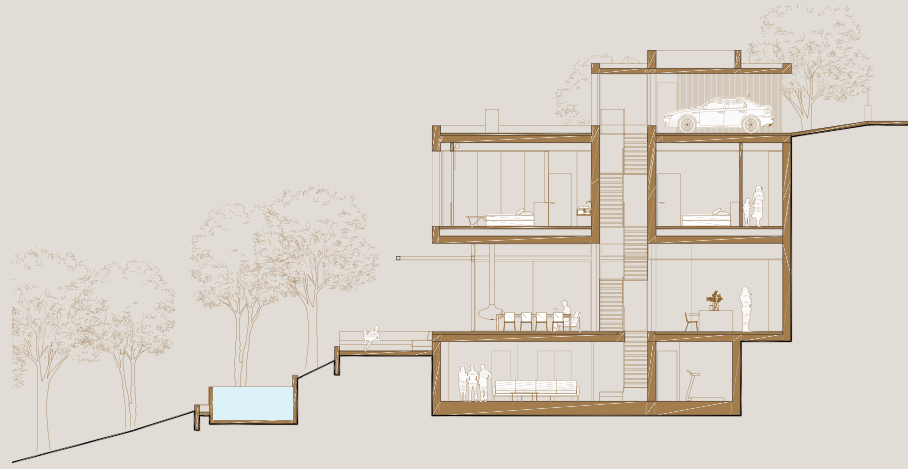
Infinity pool with salt electrolysis system.

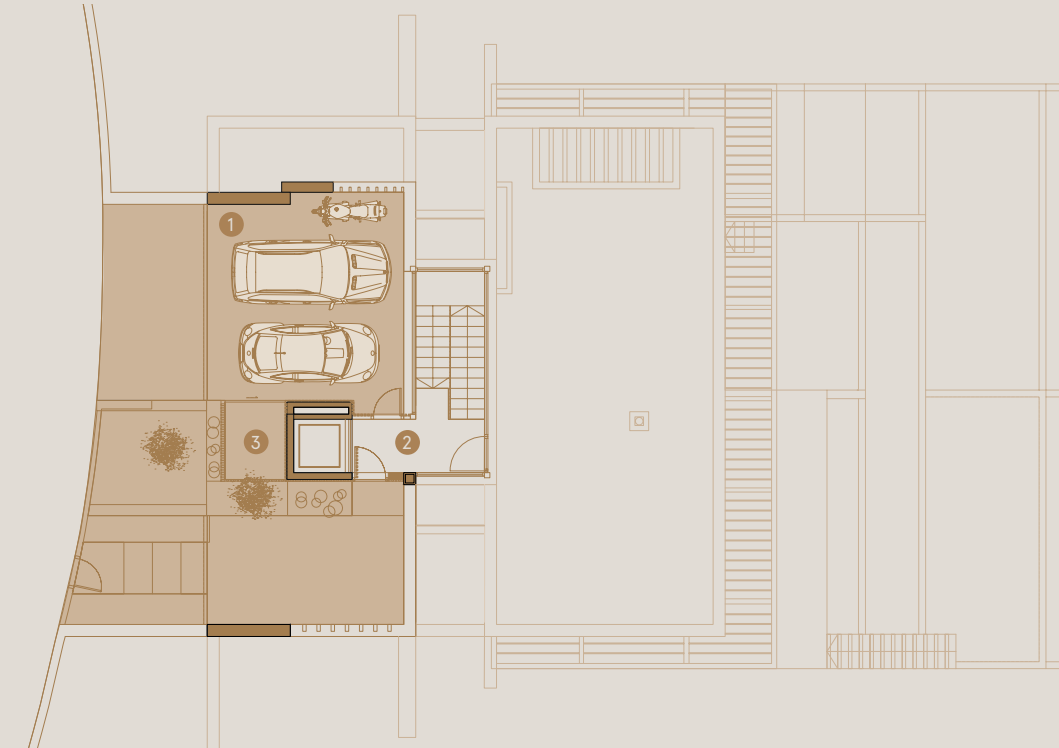


Technical plans

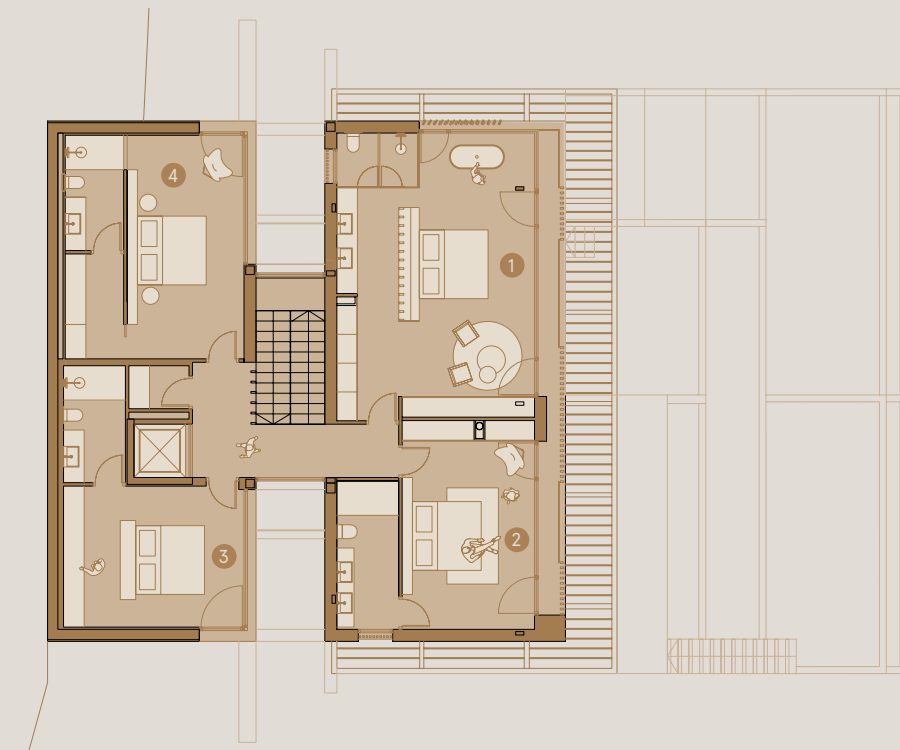
# Single-family home

-  Plots from 1,200m<sup>2</sup> to 2,400m<sup>2</sup>
-  Up to 5 en-suite bedrooms
-  Pool
-  Parking for 2 cars



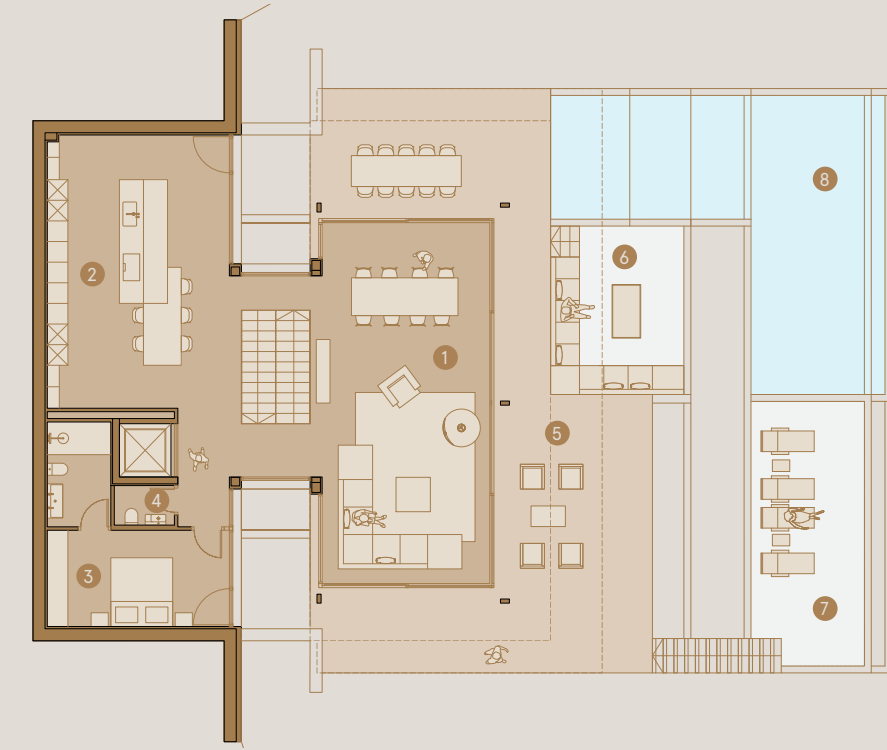


- ① Parking
- ② Hall
- ③ Storage room

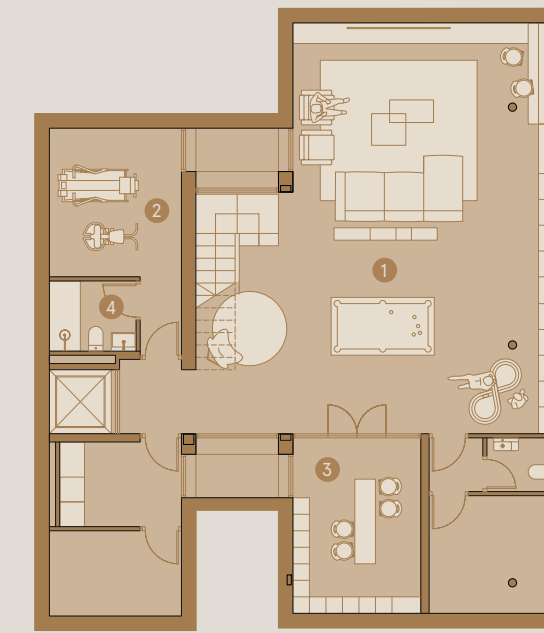


- ① Master suite
- ② Suite
- ③ Suite
- ④ Suite





- 1 Living - dining room
- 2 Kitchen
- 3 Suite
- 4 Restroom
- 5 Deck
- 6 Chill out
- 7 Solarium
- 8 Swimming pool



- 1 Cinema - pool room
- 2 Gym
- 3 Cellar
- 4 Restroom

Technical  
plans

# Semi-detached house



Plots of around 700m<sup>2</sup>



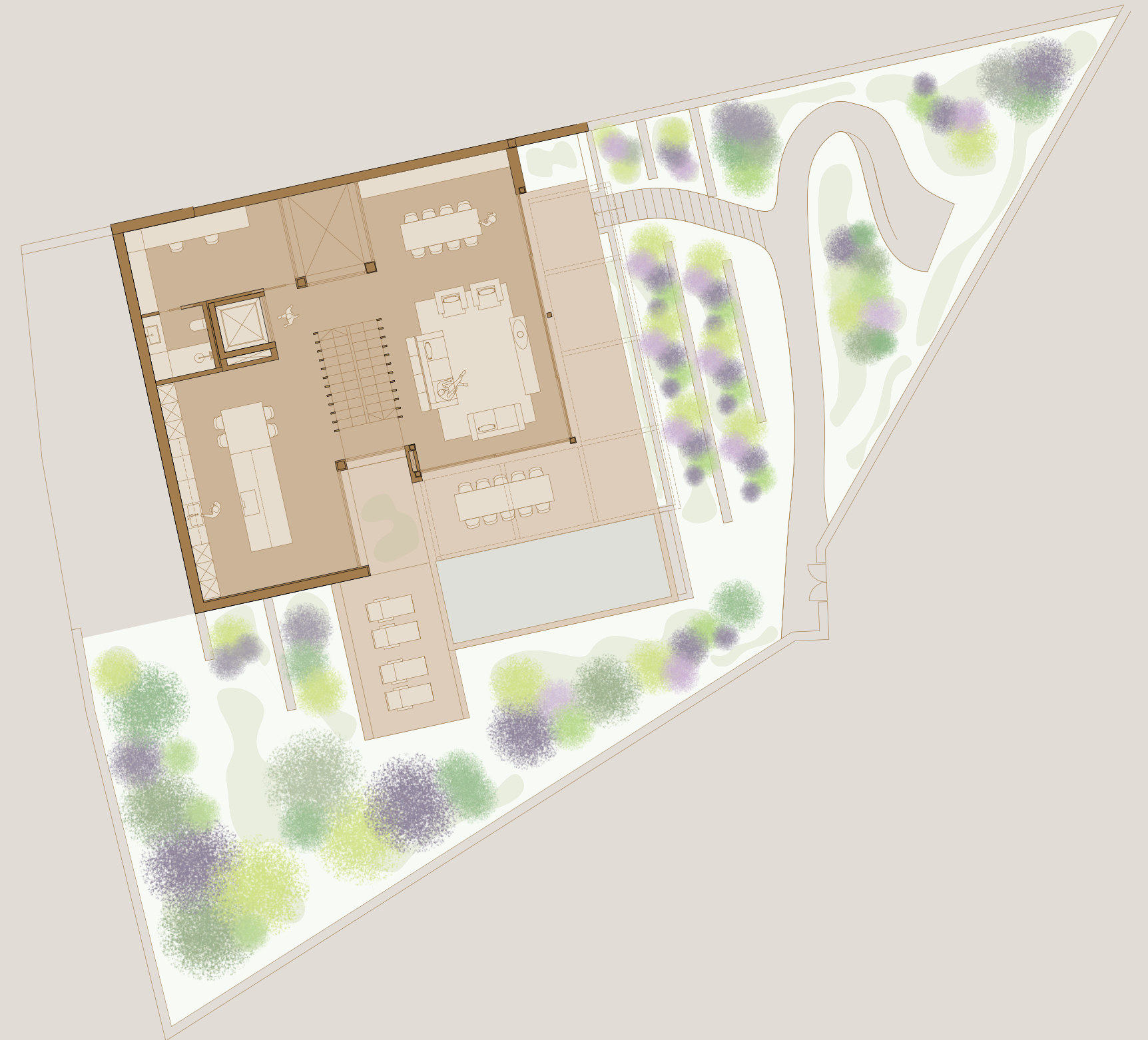
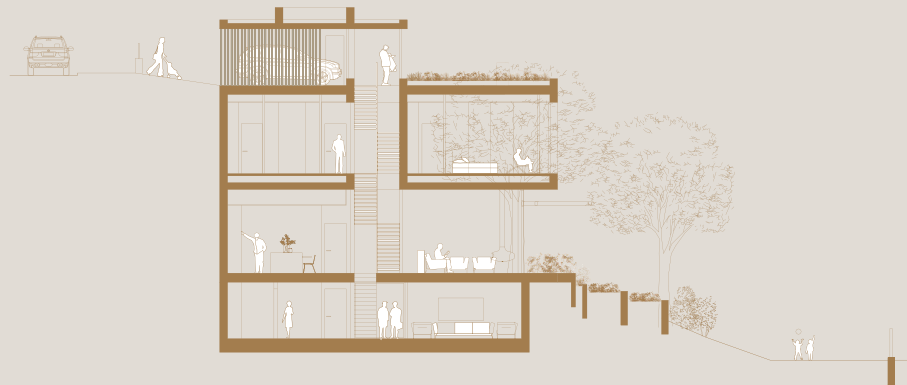
Up to 4 en-suite bedrooms



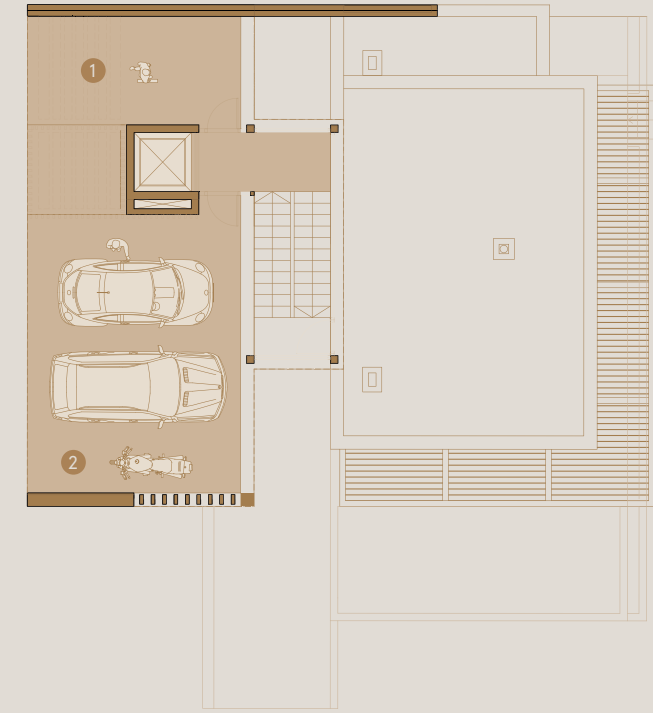
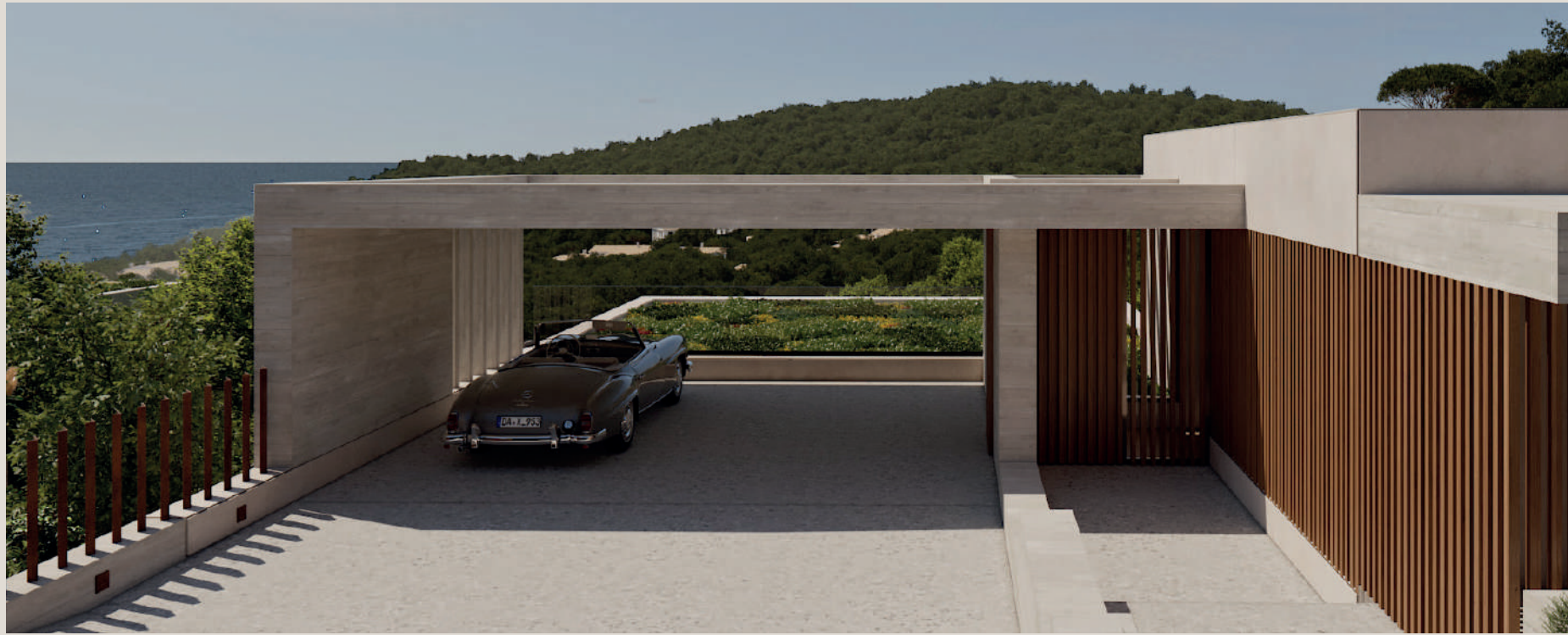
Pool



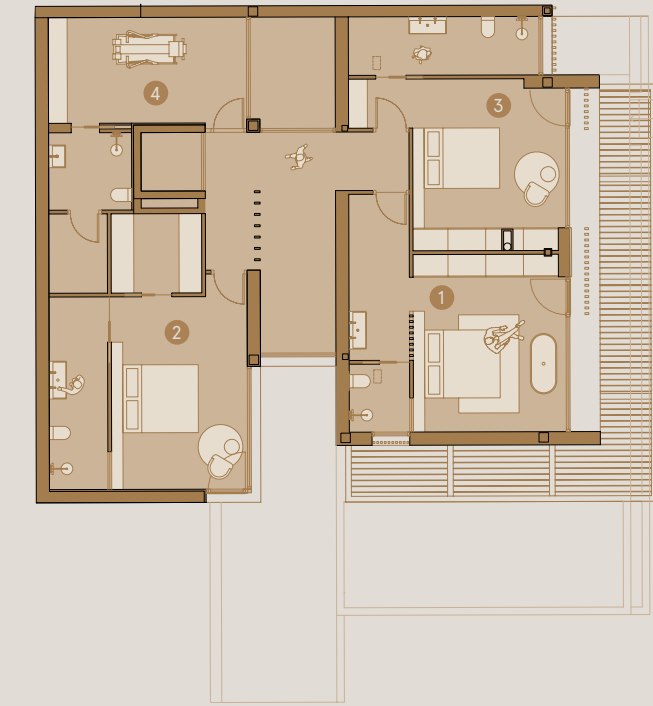
Parking for 2 cars



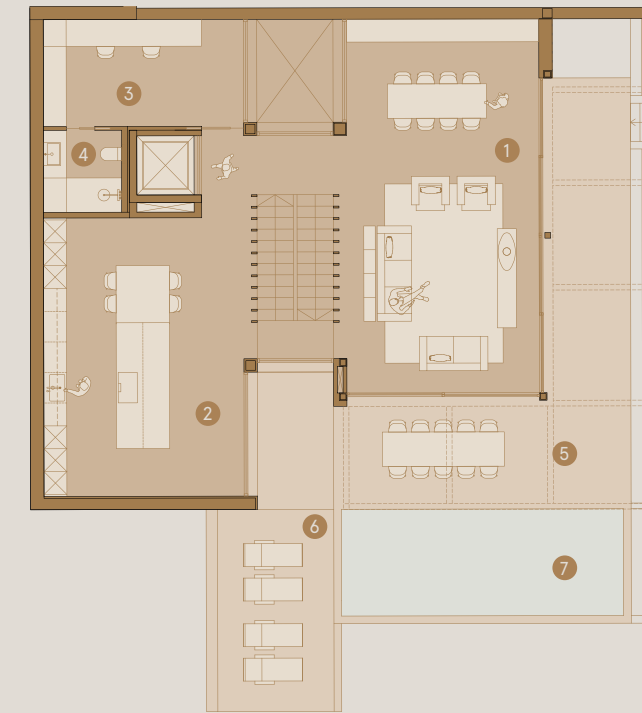




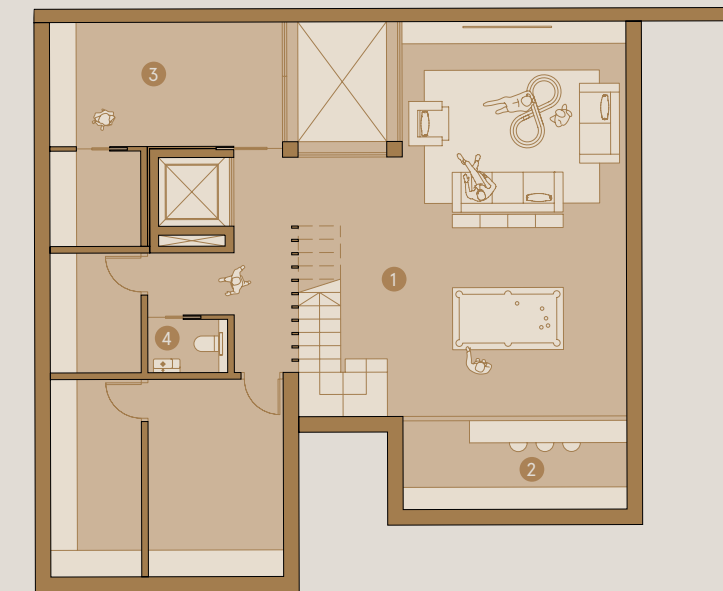
- 1 Hall
- 2 Parking



- 1 Master suite
- 2 Suite
- 3 Suite
- 4 Gym



- 1 Living - dining room
- 2 Kitchen
- 3 Study
- 4 Restroom
- 5 Deck
- 6 Solarium
- 7 Swimming pool



- 1 Cinema - Pool room
- 2 Cellar
- 3 Laundry room
- 4 Restroom

# Your idyllic life integrated into nature.

Sa Xelida, your new life project on the Costa Brava surrounded by peace and nature. Enjoy the sea and its landscapes while you discover the true meaning of living in harmony.



  
sa xelida